

CAUTION

KEEP OUT OF REACH OF CHILDREN
READ SAFETY DIRECTIONS BEFORE OPENING OR USING
FOR ANIMAL TREATMENT ONLY

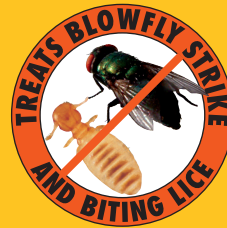
COOPERS® BLOWFLY AND LICE JETTING FLUID

ACTIVE CONSTITUENT: 16 g/L IVERMECTIN

For the treatment of, and protection against, blowfly strike on sheep
for up to 12 weeks under low to moderate fly pressure
and treatment of biting lice by jetting in long woolled sheep.

DILUTE BEFORE USE

5 L



1866403 R2

**READ DIRECTIONS FOR USE
BEFORE USING THIS PRODUCT**

COOPERS®
EST. 1843



COOPERS® BLOWFLY AND LICE JETTING FLUID

SAFETY DIRECTIONS

Poisonous if swallowed. Repeated exposure may cause allergic disorders. Sensitive workers should use protective clothing. When preparing product for use, wear cotton overalls buttoned to the neck and wrist (or equivalent clothing) and elbow length gloves. Wash hands after use.

ADDITIONAL SAFETY INFORMATION

SHEEP RE-HANDLING INTERVAL: After treatment, wait until sheep are dry before rehandling.

Additional information is listed in the safety data sheet.

FIRST AID

If poisoning occurs, contact a Doctor or Poisons Information Centre. Phone Australia 131126.

WARRANTY

Intervet Australia Pty Limited (IAPL), trading as MSD Animal Health, warrants that this product is of merchantable quality and fit for its intended purpose. IAPL's liability for any loss, including consequential losses or injury caused by act or omission, including negligent acts or omissions, by IAPL or its agent, is limited to replacing or repairing the product at the option of IAPL. If possible, a sample of any product causing concern should be retained or delivered to IAPL within 30 days for a scientific examination.

DISPOSAL

The container can be recycled if it is clean, dry, free of visible residues and has the **drumMUSTER** logo visible. Triple or pressure rinse container for disposal. Dispose of rinsate or any undiluted chemical according to State legislative requirements. Wash outside of the container and the cap. Store cleaned container in a sheltered place with cap removed. It will then be acceptable for recycling at any **drumMUSTER** collection or similar container management program site. The cap should not be replaced but may be taken separately.

Store below 30°C (room temperature) in the closed, original container. Protect from light.

SEE BELOW ON CONTAINER FOR BATCH AND EXPIRY

COOPERS ANIMAL HEALTH

Intervet Australia Pty Limited
(trading as MSD Animal Health)
91-105 Harpin Street,
Bendigo East VIC 3550
Phone: 1800 226 511

APVMA Approval No. 61069/0614

© Registered Trademark

© Yellow (PANTONE® 123) the predominant colour of Coopers packaging is a Registered Trademark. PANTONE is a registered trademark of Pantone, Inc.



199982 R2

5L

GHS Information

May damage fertility or the unborn child. May cause harm to breast-fed children. For additional information refer to SDS (www.coopersanimalhealth.com.au).



9 316147 513121

COOPERS® BLOWFLY AND LICE JETTING FLUID

PEEL
HERE

READ THE ENCLOSED LEAFLET BEFORE USING THIS PRODUCT.

SAFETY DIRECTIONS

Poisonous if swallowed. Repeated exposure may cause allergic disorders. Sensitive workers should use protective clothing. When preparing product for use, wear cotton overalls buttoned to the neck and wrist (or equivalent clothing) and elbow length gloves. Wash hands after use.

ADDITIONAL SAFETY INFORMATION

SHEEP RE-HANDLING INTERVAL: After treatment, wait until sheep are dry before rehandling. Additional information is listed in the safety data sheet.

FIRST AID

If poisoning occurs, contact a Doctor or Poisons Information Centre. Phone Australia 131126.

WARRANTY

Intervet Australia Pty Limited (IAPL), trading as MSD Animal Health, warrants that this product is of merchantable quality and fit for its intended purpose. IAPL's liability for any loss, including consequential losses or injury caused by act or omission, including negligent acts or omissions, by IAPL or its agent, is limited to replacing or repairing the product at the option of IAPL. If possible, a sample of any product causing concern should be retained or delivered to IAPL within 30 days for a scientific examination.

DISPOSAL

The container can be recycled if it is clean, dry, free of visible residues and has the **drumMUSTER** logo visible. Triple or pressure rinse container for disposal. Dispose of rinsate or any undiluted chemical according to State legislative requirements. Wash outside of the container and the cap. Store cleaned container in a sheltered place with cap removed. It will then be acceptable for recycling at any **drumMUSTER** collection or similar container management program site. The cap should not be replaced but may be taken separately.

Store below 30°C (room temperature) in the closed, original container. Protect from light.

COOPERS ANIMAL HEALTH

Intervet Australia Pty Limited
(trading as MSD Animal Health)
91-105 Harpin Street,
Bendigo East VIC 3550
Phone: 1800 226 511

APVMA Approval No. 61069/0614

© Registered Trademark

© Yellow (PANTONE® 123) the predominant colour of Coopers packaging is a Registered Trademark.

PANTONE is a registered trademark of Pantone, Inc.

SEE BELOW ON CONTAINER FOR BATCH AND EXPIRY



199982 R2



WARRANTY
 Intervet Australia Pty Limited (IAPL), trading as MSD Animal Health, warrants that this product is of merchantable quality and fit for its intended purpose. IAPL's liability for any loss, including consequential losses or injury caused by act or omission, including negligent acts or omissions, by IAPL or its agent, is limited to replacing or repairing the product at the option of IAPL. If possible, a sample of any product causing concern should be retained or delivered to IAPL.

DISPOSAL
 The container can be recycled if it is clean, dry, free of visible residues and has the *dummu/STER* logo visible. Triple or pressure rinse container for disposal. Dispose of rinse or any undiluted chemical according to State legislative requirements. Wash outside of the container and the cap. Store cleaned container in a sheltered place with cap removed. It will then be acceptable for recycling at any *dummu/STER* collection or similar container management program site. The cap should not be replaced but may be taken separately.

COOPERS ANIMAL HEALTH
 Intervet Australia Pty Limited (trading as MSD Animal Health) 91-105 Harpin Street, Bendigo East VIC 3550
 Phone: 1 800 226 511
 APVMA Approved No. 61069/0614
 © Registered Trademark
 @ Yellow (PANTONE® 123) the predominant colour of Coopers packaging is a Registered Trademark. PANTONE is a registered trademark of Pantone, Inc.

199982 R2

COOPERS® BLOWFLY AND LICE JETTING FLUID

This product is a concentrate for use in sheep of all ages. Product is NOT to be used undiluted. The 16.0 g/L ivermectin concentrate is diluted 1:500 and applied by jetting for the treatment of, and protection against, sheep blowfly strike and by hand jetting for long-wool lice treatment.

INDICATIONS

JETTING FOR BLOWFLY STRIKE: When applied as directed by hand-jetting or by modified Harrington jetting race this product protects sheep against strike by blowflies (*Lucilia cuprina*, *L. sericata*, *Chrysomya rufifacies* and *Calliphora nociva*) (including OP resistant strains of *Lucilia cuprina*) for 12 weeks under low to moderate fly pressure and will control maggots in existing strikes in the treated areas.

HAND DRESSING OF STRUCK SHEEP: This product can be applied at the blowfly dilution rate for treatment of blowfly strike wounds. Sheep should be sheared/clipped around the strike wound before saturating the area.

HAND JETTING FOR LICE: When applied as directed by hand-jetting this product also treats biting lice (*Bovicola ovis*), including synthetic pyrethroid resistant strains in long woolled sheep until the next shearing.

DIRECTIONS FOR USE

DO NOT use in plunge or shower dips.

DO NOT collect and re-use fluid which runs off.

DO NOT use jetting races that recycle fluid.

(Blowfly Strike) When used on sheep with less than 6 weeks wool a reduced period of protection may result.

(Sheep Lice) After shearing, sheep should be re-treated with an effective off-shears or short-wool product.

Precautions

It is recommended that clean water (dam/tank) be used for dilution. Use of treated municipal supply town water is not recommended if the diluted product is going to be stored.

JETTING

COOPERS BLOWFLY AND LICE JETTING FLUID requires dilution with water prior to use as a jetting fluid. See the use table below for instructions.

Mixing Instructions

Ensure equipment is thoroughly clean prior to use. COOPERS BLOWFLY AND LICE JETTING FLUID should be mixed with water in a container of known volume. Testing has confirmed that COOPERS BLOWFLY AND LICE JETTING FLUID mixes with waters of various hardness. Use either a jetting handpiece with multiple nozzles that can be combed through the fleece or a "Dutjet" jetting wand. The jetting handpiece should deliver a penetrating jet of fluid without producing a spray or mist. A modified Harrington jetting race can also be used. It should be noted the effectiveness of various races differ and testing has not been performed on all types of races available.

199982 R2

Animal/Pest	Treatment	Rate	Critical Comments
Sheep/Blowflies (<i>Lucilia cuprina</i> , <i>L. sericata</i> , <i>Chrysomya rufifacies</i> and <i>Calliphora nociva</i>)	Jetting: Prevention of blowfly strike	200 mL/ 100 L	Use at least 2.5 L diluted jetting fluid per head. Jet immediately prior to expected blowfly waves. Wool must be thoroughly saturated to skin level along the backline and breech. The pizzle area of wethers and the poll, (particularly in horned sheep) must also be treated.
	Jetting: Treating existing flystrike	Dilute 200 mL of concentrate in 100 L of water	Use at least 2.5 L diluted jetting fluid per head. COOPERS BLOWFLY AND LICE JETTING FLUID will control maggots in existing strikes in treated areas.
	Hand Dressing: Treating existing strikes		Saturate struck area thoroughly. Wool must be saturated to skin level.
Sheep/Lice (<i>Bovicola ovis</i>)	Hand Jetting: Treatment of lice in long wool	200 mL/ 100 L Dilute 200 mL of concentrate in 100 L of water	Use 0.5 L of diluted jetting fluid per month's wool growth. To control biting lice in long woolled sheep, the fleece and skin must be thoroughly wet to skin level from poll to tail in a backband about 25 cm wide. Wool and skin on the sides of the neck in front of the shoulders should also be wet to skin level. Jetting races are not suitable for the treatment of lice infestations.

NOT TO BE USED FOR ANY PURPOSE OR IN ANY MANNER CONTRARY TO THIS LABEL UNLESS AUTHORISED UNDER APPROPRIATE LEGISLATION.

WITHHOLDING PERIODS

MEAT: DO NOT USE less than 7 days before slaughter for human consumption.

MILK: DO NOT USE in lactating sheep or within 28 days of lambing where milk or milk products may be used for human consumption.

WOOL HARVESTING INTERVAL: DO NOT USE less than 6 weeks before shearing or fibre collection.

TRADE ADVICE

EXPORT SLAUGHTER INTERVAL (ESI): DO NOT USE less than 7 days before slaughter for export. The ESI on this label was correct at the time of label approval. Before using this product, confirm the current ESI from Coopers Animal Health on 1800 226 511 or the APVMA website (www.apvma.gov.au/residues).

Use of this product may result in wool residues that may not comply with European Union environmental quality standards.

Wool treated with this product may contain detectable residues: adequate treatment records should be kept and made available, if requested by wool buyers.

199982 R2

FIRST AID
 If poisoning occurs, contact a Doctor or Poisons Information Centre. Phone Australia 131126.

Additional information is listed in the safety data sheet.

FIRST AID

Before re-handling.

SHEEP RE-HANDLING INTERVAL: After treatment, wait until sheep are dry

ADDITIONAL SAFETY INFORMATION

Sensitive workers should use protective clothing. When preparing product for clothing) and elbow length gloves. Wash hands after use.

SAFETY DIRECTIONS

Poisonous if swallowed. Repeated exposure may cause allergic disorders.

Use, wear cotton overalls buttoned to the neck and wrist (or equivalent

SAFETY DIRECTIONS

SAFETY DIRECTIONS

SAFETY DIRECTIONS

SAFETY DIRECTIONS

SAFETY DIRECTIONS

SAFETY DIRECTIONS

SAFETY DIRECTIONS

SAFETY DIRECTIONS

SAFETY DIRECTIONS

SAFETY DIRECTIONS

SAFETY DIRECTIONS

SAFETY DIRECTIONS

SAFETY DIRECTIONS

SAFETY DIRECTIONS

SAFETY DIRECTIONS

SAFETY DIRECTIONS

SAFETY DIRECTIONS

SAFETY DIRECTIONS

SAFETY DIRECTIONS

SAFETY DIRECTIONS

SAFETY DIRECTIONS

SAFETY DIRECTIONS

SAFETY DIRECTIONS

SAFETY DIRECTIONS

SAFETY DIRECTIONS

SAFETY DIRECTIONS

SAFETY DIRECTIONS

SAFETY DIRECTIONS

SAFETY DIRECTIONS

SAFETY DIRECTIONS

SAFETY DIRECTIONS

SAFETY DIRECTIONS

SAFETY DIRECTIONS

SAFETY DIRECTIONS

SAFETY DIRECTIONS

SAFETY DIRECTIONS

SAFETY DIRECTIONS

SAFETY DIRECTIONS

SAFETY DIRECTIONS

SAFETY DIRECTIONS

SAFETY DIRECTIONS

SAFETY DIRECTIONS

SAFETY DIRECTIONS

SAFETY DIRECTIONS

SAFETY DIRECTIONS

SAFETY DIRECTIONS

SAFETY DIRECTIONS

SAFETY DIRECTIONS

SAFETY DIRECTIONS

SAFETY DIRECTIONS

SAFETY DIRECTIONS

SAFETY DIRECTIONS

SAFETY DIRECTIONS

SAFETY DIRECTIONS

SAFETY DIRECTIONS

SAFETY DIRECTIONS

SAFETY DIRECTIONS

SAFETY DIRECTIONS

SAFETY DIRECTIONS

SAFETY DIRECTIONS

SAFETY DIRECTIONS

SAFETY DIRECTIONS

SAFETY DIRECTIONS

SAFETY DIRECTIONS

SAFETY DIRECTIONS

SAFETY DIRECTIONS

SAFETY DIRECTIONS

SAFETY DIRECTIONS

SAFETY DIRECTIONS

SAFETY DIRECTIONS

SAFETY DIRECTIONS

SAFETY DIRECTIONS

SAFETY DIRECTIONS

SAFETY DIRECTIONS

SAFETY DIRECTIONS

SAFETY DIRECTIONS

SAFETY DIRECTIONS

SAFETY DIRECTIONS

SAFETY DIRECTIONS

SAFETY DIRECTIONS

SAFETY DIRECTIONS

SAFETY DIRECTIONS

SAFETY DIRECTIONS

SAFETY DIRECTIONS

SAFETY DIRECTIONS

SAFETY DIRECTIONS

SAFETY DIRECTIONS

SAFETY DIRECTIONS

SAFETY DIRECTIONS

SAFETY DIRECTIONS

SAFETY DIRECTIONS

SAFETY DIRECTIONS

SAFETY DIRECTIONS

SAFETY DIRECTIONS

SAFETY DIRECTIONS