

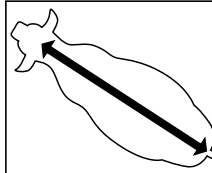
For the control of cattle lice  
(*Bovicola bovis*, *Haematopinus eurysternus*, *Solenopotes capillatus* and  
*Linognathus vituli*), house fly (*Musca domestica*), stable fly (*Stomoxys calcitrans*), and synthetic  
pyrethroid susceptible buffalo fly (*Haematobia irritans exigua*) on cattle.

#### DIRECTIONS FOR USE

**DO NOT APPLY** the product to areas of the skin that have pre-existing lesions.  
**DO NOT APPLY** as a single spot.

Pour product evenly along the backline, **FROM THE POLL TO THE BASE OF THE TAIL**. Apply 10 mL per 100 kg (2.5 mg/kg) body weight using an applicator or autodosing bottle. Animals should be restrained in a race or crush during application. **As this product may cause skin irritation it is not recommended that it be used on lactating dairy cows as animals may kick while in the dairy.** The following table may be used as a guide:

Weight (kg)	Dose (mL)	Weight (kg)	Dose (mL)
Up to 50	5	301-400	40
51-100	10	401-500	50
101-150	15	501-600	60
151-200	20	Over 600 maximum dose/animal	60
201-300	30		



Animals should not be re-treated within 3 weeks. Demize® Pour-On for Cattle will knockdown but not control synthetic pyrethroid resistant flies. It is good agricultural practice not to treat animals when they are wet or if rain is likely.

Demize® Pour-on for Cattle should be applied with the recommended applicator.

Zeta-cypermethrin is a synthetic pyrethroid. Synthetic pyrethroids may cause skin irritation. In herds that react, a large proportion of the herd may be involved. Signs may include increased body movements, arching of the back, stamping and increased tail swishing.

Occasionally an increase in salivation and tear formation may occur. These signs may be more severe in lactating dairy cows.

If present signs usually disappear within 72 hours.

**NOT TO BE USED FOR ANY PURPOSE, OR IN ANY MANNER, CONTRARY TO THIS LABEL UNLESS AUTHORISED UNDER APPROPRIATE LEGISLATION.**

**WITHHOLDING PERIOD: MEAT - DO NOT USE less than 14 days before slaughter for human consumption. MILK - NIL**

**An Export Slaughter Interval may apply to this product. Contact Elanco Animal Health or Meat and Livestock Australia before using on cattle destined for the export market.**

**SAFETY DIRECTIONS:** Will irritate the eyes and skin. Facial skin contact may cause temporary facial numbness. Avoid contact with eyes and skin. When using the product, wear elbow-length PVC gloves and face shield or goggles. If product in eyes, wash it out immediately with water. Wash hands after use. After each day's use, wash gloves and face shield or goggles.

**FIRST AID:** If poisoning occurs, contact a doctor or Poisons Information Centre. Phone 13 1126. If swallowed, and if more than 15 minutes from a hospital, induce vomiting, preferably using Ipecac Syrup APF.

**PROTECTION OF FISH, CRUSTACEANS & THE ENVIRONMENT:** Zeta-cypermethrin is toxic to fish and aquatic invertebrates. DO NOT contaminate streams, rivers or waterways with this product or used containers.

**DISPOSAL:** Dispose of container in a disposal pit specifically marked and set up for this purpose clear of waterways, vegetation and roots. Empty containers and product should not be burnt.

**Additional information is in the Material Safety Data Sheet.**

NRA Approval No. 50781/0700

BATCH NUMBER

EXPIRY DATE

Store below 30°C (Room Temperature) in a dry place in tightly closed original container. Do not store in direct sunlight.

Demize® is a registered trademark of Eli Lilly and Company

ELANCO ANIMAL HEALTH, A DIVISION OF ELI LILLY AUSTRALIA PTY. LIMITED A.C.N. 000 233 992 112 WHARF ROAD, WEST RYDE, N.S.W. 2114 TEL: TOLL FREE 1800 226 324

YK0026AL

**POUR-ON FOR CATTLE**

**5 LITRES**

**POISON**

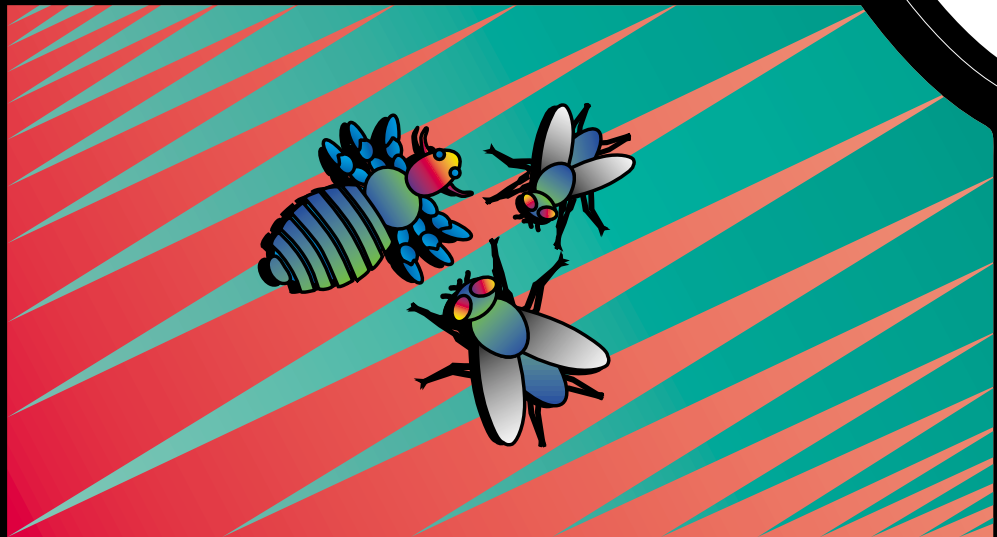
KEEP OUT OF REACH OF CHILDREN  
READ SAFETY DIRECTIONS BEFORE OPENING OR USING  
FOR ANIMAL TREATMENT ONLY

**ELANCO** AH0487

**Demize®**

POUR-ON FOR CATTLE

ACTIVE CONSTITUENT: 25 g/L zeta-cypermethrin

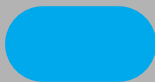


For the control of cattle  
lice, house fly, stable fly  
and susceptible  
buffalo fly on cattle.

**ELANCO**  
**NEW SCIENCE**  
**LIVESTOCK PROTECTION**  
**PROGRAM**

PARASITICIDES

YK0012AL



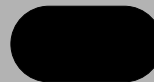
Process Cyan



Process Magenta



Process Yellow



Rich Black

For the control of cattle lice (*Bovicola bovis*, *Haematopinus eurysternus*, *Solenopotes capillatus* and *Linognathus vituli*), house fly (*Musca domestica*), stable fly (*Stomoxys calcitrans*), and synthetic pyrethroid susceptible buffalo fly (*Haematobia irritans exigua*) on cattle.

#### DIRECTIONS FOR USE

**DO NOT APPLY** the product to areas of the skin that have pre-existing lesions.

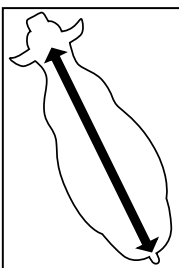
**DO NOT APPLY** as a single spot.

Pour product evenly along the backline, **FROM THE POLL TO THE BASE OF THE TAIL.**

Apply 10 mL per 100 kg (2.5 mg/kg) body weight using an applicator or autodosing bottle. Animals should be restrained in a race or crush during application. **As this product may cause skin irritation it is not recommended that it be used on lactating dairy cows as animals may kick while in the dairy.**

The following table may be used as a guide:

Weight (kg)	Dose (mL)	Weight (kg)	Dose (mL)
Up to 50	5	301-400	40
51-100	10	401-500	50
101-150	15	501-600	60
151-200	20	Over 600 maximum dose/animal	60
201-300	30		



Animals should not be re-treated within 3 weeks. Demize® Pour-On for Cattle will knockdown but not control synthetic pyrethroid resistant flies.

It is good agricultural practice not to treat animals when they are wet or if rain is likely.

Demize® Pour-On for Cattle should be applied with the recommended applicator.

Zeta-cypermethrin is a synthetic pyrethroid. Synthetic pyrethroids may cause skin irritation. In herds that react, a large proportion of the herd may be involved. Signs may include increased body movements, arching of the back, stamping and increased tail swishing. Occasionally an increase in salivation and tear formation may occur. These signs may be more severe in lactating dairy cows. If present signs usually disappear within 72 hours.

**NOT TO BE USED FOR ANY PURPOSE, OR IN ANY MANNER, CONTRARY TO THIS LABEL UNLESS AUTHORISED UNDER APPROPRIATE LEGISLATION.**

**WITHHOLDING PERIOD: MEAT - DO NOT USE less than 14 days before slaughter for human consumption. MILK - NIL**

An Export Slaughter Interval may apply to this product. Contact Elanco Animal Health or Meat and Livestock Australia before using on cattle destined for the export market.

**SAFETY DIRECTIONS:** Will irritate the eyes and skin. Facial skin contact may cause temporary facial numbness. Avoid contact with eyes and skin. When using the product, wear elbow-length PVC gloves and face shield or goggles. If product in eyes, wash it out immediately with water. Wash hands after use. After each day's use, wash gloves and face shield or goggles.

**FIRST AID:** If poisoning occurs, contact a doctor or Poisons Information Centre. Phone 13 1126. If swallowed, and if more than 15 minutes from a hospital, induce vomiting, preferably using Ipecac Syrup APF.

#### PROTECTION OF FISH, CRUSTACEANS & THE ENVIRONMENT:

Zeta-cypermethrin is toxic to fish and aquatic invertebrates. DO NOT contaminate streams, rivers or waterways with this product or used containers.

**DISPOSAL:** Dispose of container in a disposal pit specifically marked and set up for this purpose clear of waterways, vegetation and roots. Empty containers and product should not be burnt.

Additional information is in the Material Safety Data Sheet.

NRA Approval No. 50781/0700

Store below 30°C (Room Temperature) in a dry place in tightly closed original container.

Do not store in direct sunlight.

Demize® is a registered trademark of Eli Lilly and Company

ELANCO ANIMAL HEALTH  
A DIVISION OF ELI LILLY AUSTRALIA PTY. LIMITED  
A.C.N. 000 233 992  
112 WHARF ROAD, WEST RYDE, N.S.W. 2114  
TEL: TOLL FREE 1800 226 324

BATCH NUMBER

EXPIRY DATE

## THE DEMIZE RANGE OF PACKS ARE DESIGNED FOR YOUR SAFETY & CONVENIENCE

#### 5 LITRE BACKPACK

**No leaking or crushing. Now you can have a faster, safer and more comfortable day in the yards.**

The DEMIZE backpack has the outlet at the TOP and an outlet valve to prevent collapsing as it empties.

#### Easy carrying handle.

A comfortable, moulded handle has been incorporated into the unique functional design. The DEMIZE gun has improved grip and reduced spring tension to reduce pressure when delivering even the largest dosages. Combined with a quick convenient dial up dose controller, you can treat animals faster, accurately and without hand strain.



#### 20 LITRE DRUM

**Designed for your safety and ease of use while saving money by not wasting product.**

The DEMIZE 20 litre drum has a swing handle and twin openings, making it easy to pour. No 'glugging', spillage or waste. A draw off cap is available for the 20 litre drum, enabling direct delivery from the drum, saving time and the inconvenience of decanting into backpacks.



#### 1 LITRE SQUEEZEPACK

**Save on cost by buying only what you need and avoid the risk of the product expiring before you use it.**

Easy to handle, convenient size that treats 40 animals (250 kg).



# POUR-ON FOR CATTLE

20 LITRES

## POISON

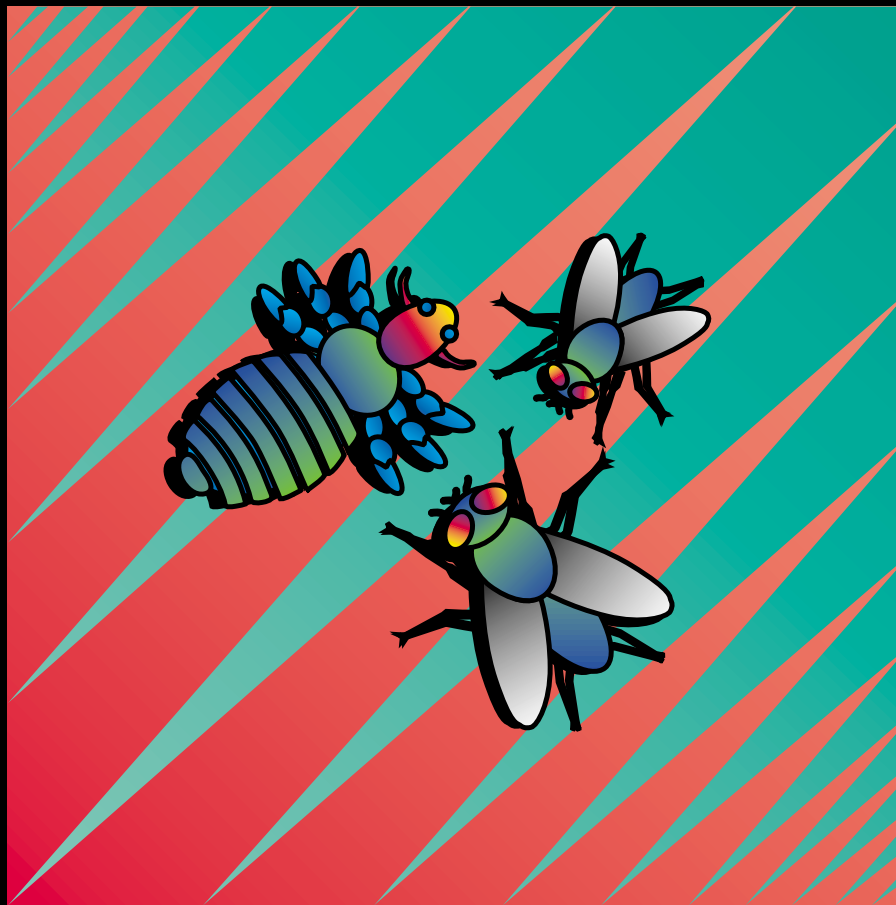
KEEP OUT OF REACH OF CHILDREN  
READ SAFETY DIRECTIONS BEFORE OPENING OR USING  
FOR ANIMAL TREATMENT ONLY

**ELANCO** AH0487

# Demize®

POUR-ON FOR CATTLE

ACTIVE CONSTITUENT: 25 g/L zeta-cypermethrin



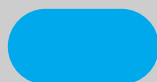
For the control of cattle  
lice, house fly, stable fly  
and susceptible  
buffalo fly on cattle.

NRA Approval No. 50781/0100

**ELANCO**  
**NEW SCIENCE**  
**LIVESTOCK PROTECTION**  
**PROGRAM**

PARASITICIDES

YK0014AL



Process Cyan



Process Magenta



Process Yellow



Rich Black