

# Tri-Solfen® Technical Notes



## Tri-Solfen Application Procedures for Sheep

As with many animal health products, ensuring that Tri-Solfen is applied correctly is an important part of the process. To achieve the best results, follow these instructions for each of the registered procedures. Registration details are available on the Tri-Solfen packaging label.

Tri-Solfen is a gel spray designed for topical use on wounds. Apply Tri-Solfen spray to the wound immediately after the procedure is completed using the Tri-Solfen applicator. It is important that Tri-Solfen is applied evenly covering the wound area and tail, particularly the wound edges. Do not spray to run-off.

## Mulesing

### DOSE RATES

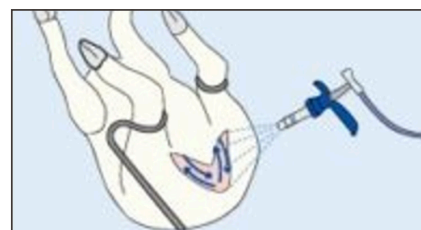
For mulesing, each does of Tri-Solfen dose is applied in 2 ml increments. The heavier the animal being treated, the higher the required dose rate.

Liveweight/Bodyweight	Number of 2ml Sprays per animal	Total Dose
5kg-10kg	3	6ml
11kg-15kg	4	8ml
16kg-20kg	5	10ml
Over 20kg	6	12ml

### MULESING APPLICATION

**Step 1:** Apply Tri-Solfen immediately after mulesing.

**Step 2:** Apply Tri-Solfen as a series of stripes up and down the wound for full coverage of the wound and tail.



## Tail Docking

### APPLICATION & DOSE RATES

**Step 1:** Apply Tri-Solfen immediately after removing the tail surgically or with a hot iron.

**Step 2:** Apply the Tri-Solfen spray to the wound immediately after mulesing or tail docking. Ensure that the entire wound area is evenly covered with spray, particularly wound edges.

Liveweight/Bodyweight	Number of 2ml Sprays per animal	Total Dose
Lambs up to 10kg	1	1.5ml
Lambs over 10kg	1	2ml

# Tri-Solfen® Technical Notes



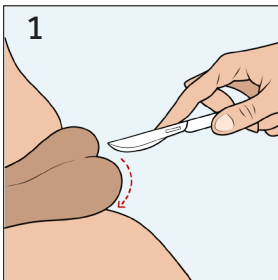
## Castration

### DOSE RATES

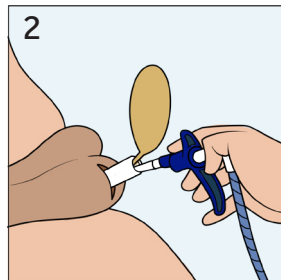
For castration, each dose of Tri-Solfen is applied in 3 parts. One third inside the vaginal tunic of each testicle and the final third to the edges of the scrotal skin wounds.

Liveweight/Bodyweight	Inside Vaginal Tunic Step 3	External incisions Step 4	Total Dose
Lambs up to 10kg	2 x 1ml	1 x 1ml	3ml
Lambs over 10kg	2 x 1.5ml	1 x 1.5ml	4.5ml

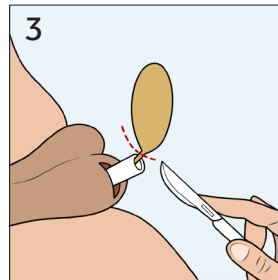
### CASTRATION APPLICATION



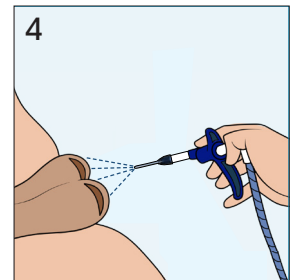
1 Cut through skin of the scrotum with a scalpel as per normal castration procedure.



2 Insert the nozzle of the applicator as far into the vaginal tunic as possible and eject 1/3 of the total dose.



3 Remove testis as per usual procedure. Repeat steps 1–3 on the other side of the scrotum to remove the second testis.



4 Apply the final third of the dose to the edges of the scrotal incision.

### DO NOT SPRAY TO RUN OFF. ENSURE THAT THE PRODUCT FROTHS ON APPLICATION

1. Always use the specially designed Tri-Solfen Applicator for all applications of Tri-Solfen.



CASTRATION NOZZLE

2. When applying Tri-Solfen topically to external wounds always ensure that the applicator is squeezed hard enough to cause the product to froth and cause foaming. This will ensure that the product sticks to the wound and that run off from the application site is minimised.



CORRECT APPLICATION